

EUROPEAN CHAMPIONSHIPS 2011

Travemünde 23.July – 30. July 2011
GERMANY

INVITATION



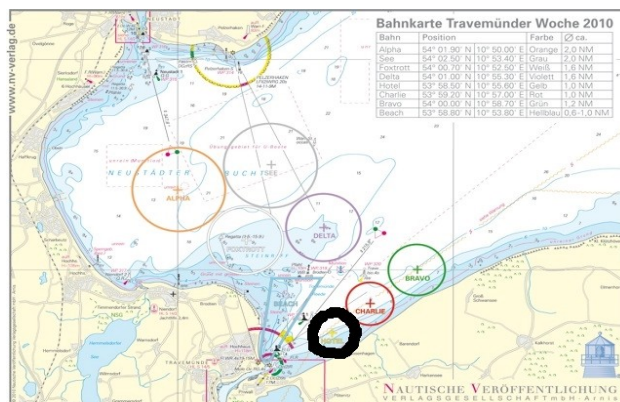
Venue

Travemünde is part of the city Lübeck which was of old the capital of the medieval merchants cooperation called „Hanse“. Many beautiful buildings in Lübeck date back as far as 1300AD.

Travemünde is one of the biggest ferry ports in Europe. Travemünde Week is one of the biggest sailing weeks in Germany with several hundred of sailors competing in dozens of different classes. International Moths are well known here as the Europeans in 2000 and the Worlds in 1979(!) had been held here already.

EUROPEAN CHAMPIONSHIPS 2011

Travemünde 23.July – 30. July 2011
GERMANY



Racing

will take place on the Baltic Sea on course Hotel, see chart above.

This area is located next to the Mecklenburg coast. There will be a dedicated rigging area on the Priwall beach so that the participants don't have to cross the fairway. Distance to the racecourse will be approx. 2 nm.

EUROPEAN CHAMPIONSHIPS 2011

Travemünde 23.July – 30. July 2011
GERMANY

PROGRAMME

(preliminary)

Saturday, 23. July	Registration, Measurement „Dash-for-Cash“ Race inside the Harbour
Sunday, 24. July	Registration, Measurement Practice Race Opening Ceremony
Monday, 25. July	Races 1 – 3
Tuesday, 26. July	Races 4 – 6
Wednesday, 27. July	Races 7 – 9
Thursday, 28. July	Layday (Reserve)
Friday, 29. July	Races 10 – 12
Saturday, 30. July	Races 13 – 15 Prizegiving Ceremony and Dinner

A maximum of four races per day is possible and in the discretion of the race officer. In total 15 races are planned during 5 days of racing.

EUROPEAN CHAMPIONSHIPS 2011

Travemünde 23.July – 30. July 2011
GERMANY



L ü b e c k e r Y a c h t - C l u b

LYC



Accommodation

Camping is possible right next to the rigging area for a fee of 5,- EUR per night for small tents or caravans and 10,- EUR for bigger ones. Holiday homes are available quite near, see www.landal.com.

Many hotels, private guestrooms, apartments and hostels are available in Travemünde. For more information please see: <http://www.travemuende-tourism.de/>

Participants are welcome to use all facilities for up to one week prior to the event.

EUROPEAN CHAMPIONSHIPS 2011

Travemünde 23.July – 30. July 2011
GERMANY



Shipping, Arrival

Nearest international airport is Hamburg (HAM). An address for shippers will be provided for in the NOR. Boxes can be stored securely during the event.

Picking up sailors from the airport can be arranged.

